



Beechfield Grove, Woodsetton, Coseley.

£229,950 Freehold

3 bedroom semi-detached house for sale

Description

A delightful 3 bedroom semi detached house on the popular Bramford Estate, the property is for sale with no upward chain and comprises - Storm porch leading to entrance hall, modern kitchen, lounge/dining room, modern bathroom suite, driveway providing off road parking, shared driveway and garage, private rear garden with patio area, extending to the rear and side, central heating and double glazing, within easy reach of popular local schools, amenities and shops, with Coseley and Tipton train stations nearby.

We do hold the Interpretive mining report, which indicates that lending is viable, checks necessary.

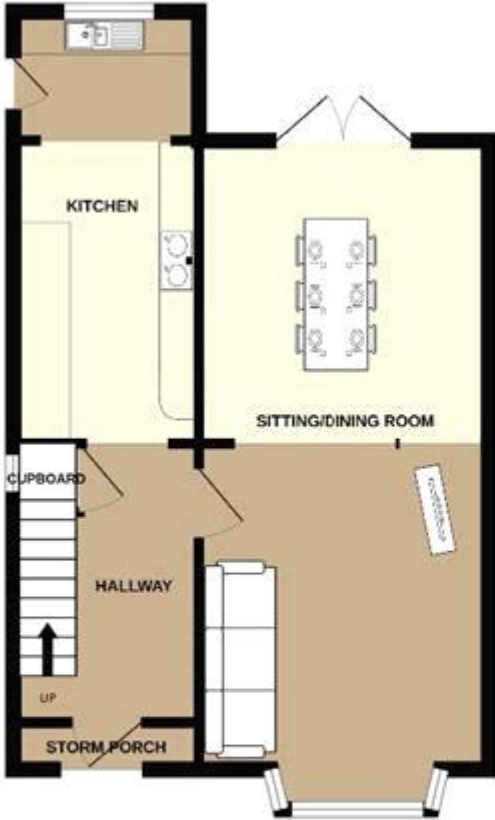
Council Tax Band: C

Tenure: Freehold

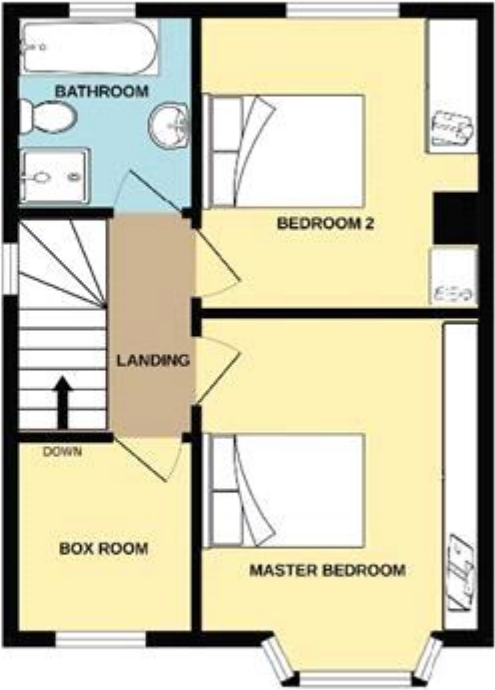
Tenure

Freehold





GROUND FLOOR



1ST FLOOR

Whilst every attempt has been made to ensure the accuracy of the floorplan contained here, measurements of doors, windows, rooms and any other items are approximate and no responsibility is taken for any error, omission or mis-statement. This plan is for illustrative purposes only and should be used as such by any prospective purchaser. The services, systems and appliances shown have not been tested and no guarantee as to their operability or efficiency can be given.



Energy Efficiency Rating		Environmental Impact (CO ₂) Rating	
Current	Potential	Current	Potential
Very energy efficient - lower running costs		Very environmentally friendly - lower CO ₂ emissions	
(92-100) A		(92-100) A	
(81-91) B		(81-91) B	
(69-80) C		(69-80) C	
(55-68) D		(55-68) D	
(39-54) E		(39-54) E	
(21-38) F		(21-38) F	
(1-20) G		(1-20) G	
Not energy efficient - higher running costs		Not environmentally friendly - higher CO ₂ emissions	
England & Wales		England & Wales	
EU Directive 2002/91/EC		EU Directive 2002/91/EC	
The energy efficiency rating is a measure of the overall efficiency of a home. The higher the rating the more energy efficient the home is and the lower the fuel bills will be.		The environmental impact rating is a measure of a home's impact on the environment in terms of carbon dioxide (CO ₂)	

Viewing by appointment only
 Courtney Downing Estates Ltd - Head Office
 Courtney Downing Estates Ltd, C/O Clear Accountancy Services Ltd, E Innovation Centre,
 Telford, Shropshire TF2 9FT
 Tel: 07792936415 Email: courtney@courtneydowningestates.co.uk Website:

