



# High Street, Stanton Hill, Sutton-in-Ashfield

£125,000 Freehold

2 bedroom terraced house for sale

## Description

2/3 Bedroom end terraced property that has been completely refurbished throughout, and is for sale with no upward chain, the property comprises- Lounge, modern kitchen, modern shower room, 2 bedrooms and a 3rd room suitable as an office or nursery room, rear garden.

Council Tax Band: A  
Tenure: Freehold

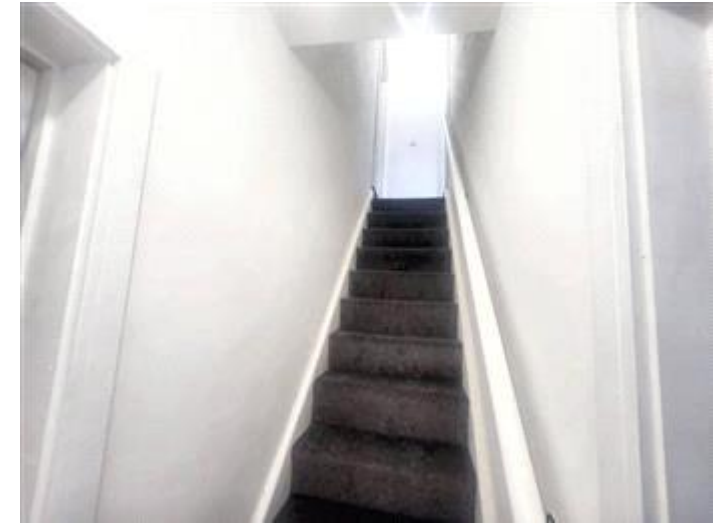
## Tenure

Freehold









Energy Efficiency Rating		Environmental Impact (CO <sub>2</sub> ) Rating	
	Current	Potential	
Very energy efficient - lower running costs			Very environmentally friendly - lower CO <sub>2</sub> emissions
(92-100) <b>A</b>			(92-100) <b>A</b>
(81-91) <b>B</b>			(81-91) <b>B</b>
(69-80) <b>C</b>			(69-80) <b>C</b>
(55-68) <b>D</b>			(55-68) <b>D</b>
(39-54) <b>E</b>			(39-54) <b>E</b>
(21-38) <b>F</b>			(21-38) <b>F</b>
(1-20) <b>G</b>	<b>10</b>		(1-20) <b>G</b>
Not energy efficient - higher running costs			Not environmentally friendly - higher CO <sub>2</sub> emissions
<b>England &amp; Wales</b>	EU Directive 2002/91/EC		<b>England &amp; Wales</b>
			EU Directive 2002/91/EC

The energy efficiency rating is a measure of the overall efficiency of a home. The higher the rating the more energy efficient the home is and the lower the fuel bills will be.

The environmental impact rating is a measure of a home's impact on the environment in terms of carbon dioxide (CO<sub>2</sub>).

Viewing by appointment only  
 Courtney Downing Estates Ltd - Head Office  
 Courtney Downing Estates Ltd, C/O Clear Accountancy Services Ltd, E Innovation Centre,  
 Telford, Shropshire TF2 9FT  
 Tel: 07792936415 Email: [courtney@courtneydowningestates.co.uk](mailto:courtney@courtneydowningestates.co.uk) Website:

