





# Nursery Meadows, Shrewsbury

£525,000 Freehold

4 bedroom detached house for sale

## Description

Executive 4 double bedroom detached house, this spacious family property is on a corner plot, set in a quiet and small development and consists of-

Entrance hallway, lounge, study, downstairs wc, large open plan kitchen/diner, utility room, En-suite to main bedroom, 3 more double bedrooms, bathroom, driveway for several cars, garage, lawned gardens to front, side and rear, double glazing and central heating.

Council Tax Band: E

Tenure: Freehold

Parking options: Driveway, Garage

Garden details: Front Garden, Rear Garden

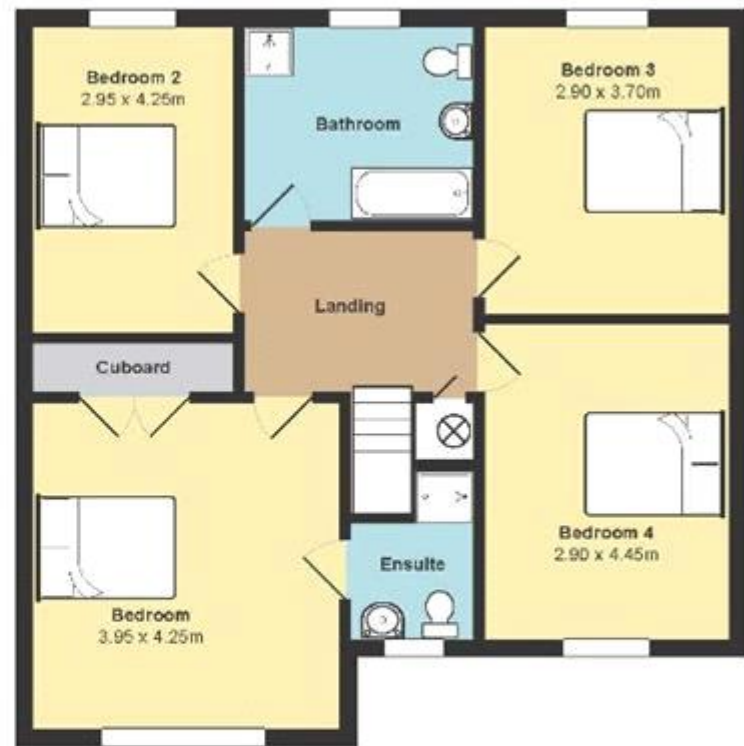
## Tenure

Freehold





Ground Floor



1st Floor

**For Guidance Purposes Only**

Copyright 2024 Courtney Downing Estates - Telford



Energy Efficiency Rating		Environmental Impact (CO <sub>2</sub> ) Rating	
Current	Potential	Current	Potential
Very energy efficient - lower running costs		Very environmentally friendly - lower CO <sub>2</sub> emissions	
(92-100) <b>A</b>		(92-100) <b>A</b>	
(81-91) <b>B</b>		(81-91) <b>B</b>	
(69-80) <b>C</b>		(69-80) <b>C</b>	<b>83</b>
(55-68) <b>D</b>		(55-68) <b>D</b>	
(39-54) <b>E</b>		(39-54) <b>E</b>	
(21-38) <b>F</b>		(21-38) <b>F</b>	
(1-20) <b>G</b>		(1-20) <b>G</b>	
Not energy efficient - higher running costs		Not environmentally friendly - higher CO <sub>2</sub> emissions	
<b>England &amp; Wales</b> EU Directive 2002/91/EC		<b>England &amp; Wales</b> EU Directive 2002/91/EC	
The energy efficiency rating is a measure of the overall efficiency of a home. The higher the rating the more energy efficient the home is and the lower the fuel bills will be.		The environmental impact rating is a measure of a home's impact on the environment in terms of carbon dioxide (CO <sub>2</sub> )	

Viewing by appointment only  
 Courtney Downing Estates Ltd - Head Office  
 Courtney Downing Estates Ltd, C/O Clear Accountancy Services Ltd, E Innovation Centre,  
 Telford, Shropshire TF2 9FT  
 Tel: 07792936415 Email: [courtney@courtneydowningestates.co.uk](mailto:courtney@courtneydowningestates.co.uk) Website:

